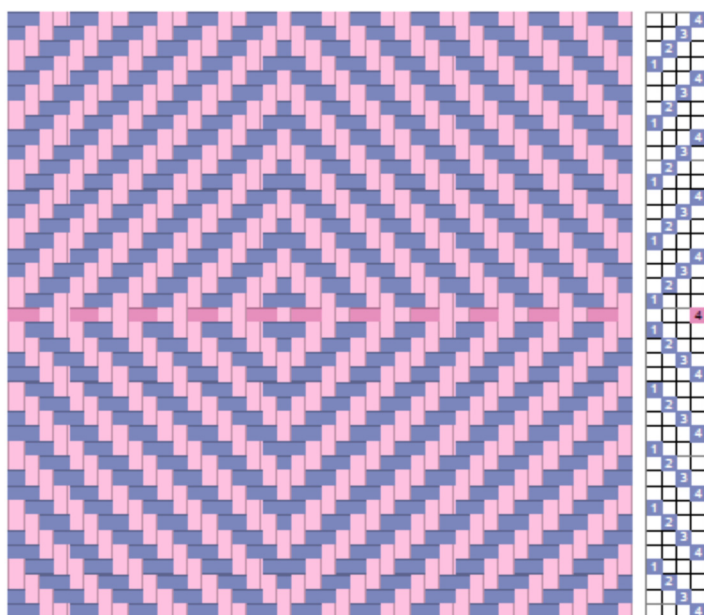


Extended Twills

As the name implies, these twills are formed by repeating some sections of the motifs, usually to



accentuate the size of the pattern.

In the drawdown on the left, the pointed twill becomes larger and more obvious.

In this example, an extra weft shot (shown in pink in the drawdown) is introduced before the treadling the second half of the pointed twill, to emphasize the middle, but the treadling could have been 4, 3, 2, 1, 2, 3, 4, etc.

In the fabric below, the motif is somewhat obscured by the

variegated colors of the yarn, but the ridges of the twill lines going in one direction for several repeats and then changing to the other direction are visible.

In the scarf, the pointed twill was converted from the usual 6 threads to a 42-threads repeat, with 23 threads in a left-hand straight twill before the point where the twill turns. The warp is Tencel®, sett at 24 epi. This means that if the pointed twill had been used, the motif would have been $\frac{1}{4}$ " (6/24); with the extended twill, the motif is $1\frac{3}{4}$ ".

